

"We can handle..."

AMSteel
Port & Steel Operations



AMSTEEL OPERATION REPORT

MV LINDA STAR Operational Report

M/V LINDA STAR loaded successfully

• Vessel Name	: MV LINDA STAR
• Cargo	: Bag Cement
• Loaded Quantity on Board	: 17,561 Bags / 26,461.55 Ton
• Rejected Quantity by Master	: 60 Bags / 90.15 Ton
• Operation Start	: 0630 02 nd of August 2018
• Operation Finish	: 2300 13 th of August 2018
• Vessel Berthing	: 0320 02 nd of August 2018
• Vessel Sailing	: 1930 14 th of August 2018
• Equipment Used	: 2 LHM 550 Mobile Harbor Cranes / 1 Sennebogen 870 2 Forklifts / 2 Excavators
• Idle Duration	: Total 38 Hours
• Master Instruction	: 2 Hours
• Working Band	: 36 Hours
• Hours Operated	: 280 Hours (rounded down)
• Net operation	: 242 Hours
• Actual Performance	: 94 Ton Per Hour / 2,268 Ton Per Day
• Theoretical Performance	: 109 Ton Per Hour / 2,624 Ton Per Day

AMSTEEL handled very successfully

MV LINDA STAR Operational Report

Operational Preparation



AMSTEEL handled very successfully

MV LINDA STAR Operational Report

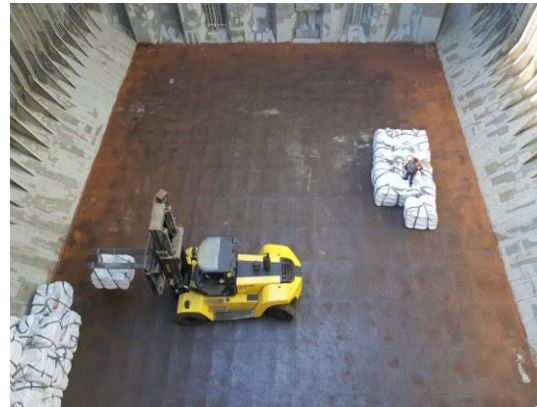
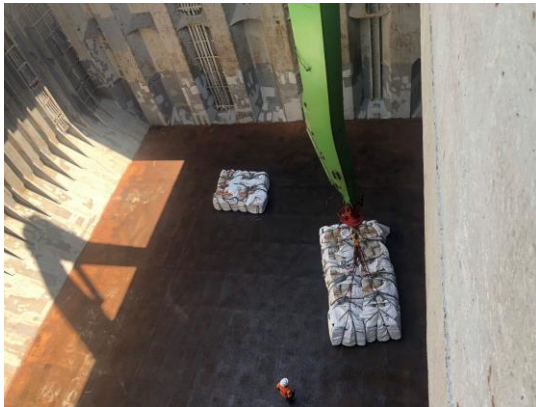
Vessel Berthing



AMSTEEL handled very successfully

MV LINDA STAR Operational Report

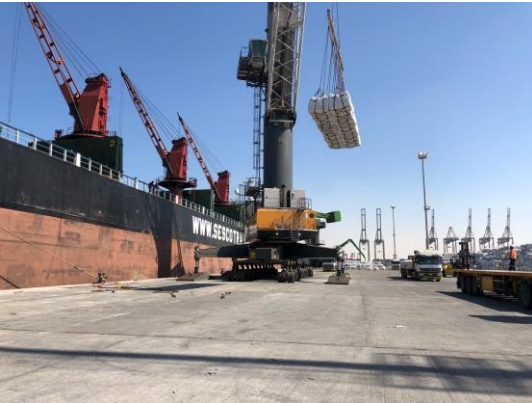
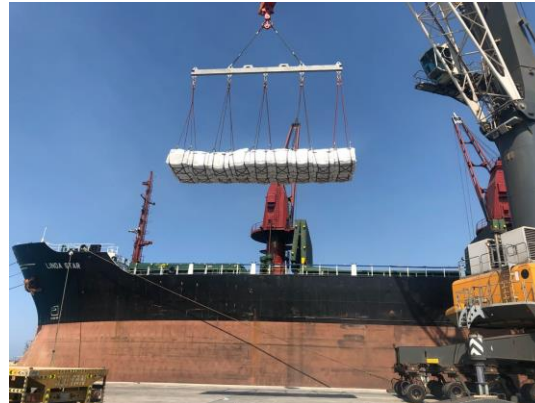
Export Operation



AMSTEEL handled very successfully

MV LINDA STAR Operational Report

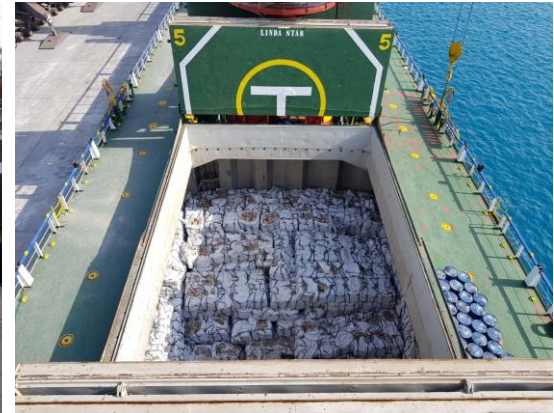
Export Operation



AMSTEEL handled very successfully

MV LINDA STAR Operational Report

Export Operation



AMSTEEL handled very successfully

MV LINDA STAR Operational Report

Operation Completed



MV LINDA STAR loaded very successfully



Thank You

Info@amsteel.com

Sales@amsteel.com